

PATROL 460



€16.000+vat

COLOUR SCHEMES

BLACK



DARK GREY



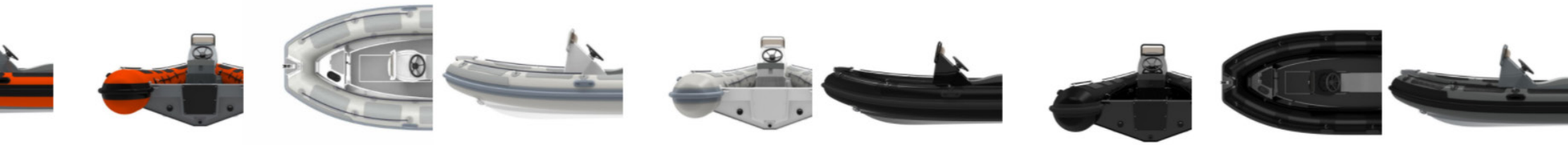
DARK GREY ORANGE



LIGHT GREY



DETAIL IMAGES



The Patrol range of commercial quality RIBs are designed to work both excellently as a long distance family cruiser or a hardcore work boat. Built to withstand the toughest of conditions.

The hull is built from 5083 aluminium plates with 6 and 10mm stringers. With their super deep V, wide chines and large diameter tube, they offer high manoeuvrability, high safety and a soft dry ride even in the roughest conditions.

The range offers something for almost every requirement, from Sailing club support to Police and Rescue applications.

The Patrol boats carry large loads and plane quickly and easily with little horsepower. For charter boat and commercial operators, the modular set-up option means that we can build a layout that suits your needs. These boats are ideal pursuit craft or work boats and can be configured with different seating and console options. When safety, toughness & reliability really matter, the Patrol range should be your first port of call. With MCA rating & commercial coding available, the Patrol range is perfect for commercial chartering or working offshore too.

STANDARD FEATURES

- ORCA® Hypalon or Valmex® PVC tube
- Welded seams (PVC)
- Flush mount non-return valves
- High tensile chromated & powder coated aluminium hull
- Integrated transom supports
- Self-draining deck
- Integrated under-deck fuel tank (40L)
- Lifting points and towing eyes
- Tow bridle points
- Heavy duty rubbing strake
- Keel guard
- Highfield dry bag
- Foot pump, oars, repair kit

OPTIONAL EQUIPMENT

- Electrical Pack for Console
- Electrical Pack for Boat
- Jockey Console
- Single Jockey or Bolster
- Rollbar
- Rear Tow Post
- Boat Cover
- Brushed foam teak finish deck
- Carbon Dash

OVERALL LENGTH	4.59 m	15' 1"
INTERNAL LENGTH	3.53 m	11'7"
OVERALL WIDTH	2.11 m	6' 11"
INTERNAL WIDTH	1.05 m	3' 5"
DEAD RISE	20°	
TUBE DIAMETER	47cm	19"
NUMBER OF AIR CHAMBERS	5	
MAXIMUM LOAD	944 kg	2081 lb
MAXIMUM PEOPLE	9	
BOAT ONLY WEIGHT	279 kg	615 lb
MAXIMUM POWER	80 hp	
ENGINE SHAFT	L	
FUEL TANK	40 L	10.5 gal
DESIGN CATERGORY	C	

*Includes console and rear seat