



BAVARIA
YACHTS

Passion made

BAVARIA
SR36

SALES
MANUAL

Content

1 Overview

1.1 Story	3
1.2 Main Characteristics	6

2 Exterior

2.1 General Dimensions	7
2.2 Hull	9
2.3 Deck	10
2.4 Cockpit	13
2.5 Anchor	20
2.6 Hardtop / Softtop	21
2.7 Patio glas door	23
2.8 Deck Flooring	24
2.9 Lightning Plan	25
2.10 Upholstery	26
2.11 Hoods & Covers	27

3 Interior

3.1 General Dimensions	29
3.2 Aft Cabin	32
3.3 Head & Shower	35
3.4 Pantry	37
3.5 Salon	40
3.6 Foreship Cabin	43
3.7 Upholstery	45
3.8 Wood	46
3.9 Lightning plan	47
3.10 Sockets & Switches	48

4 Systems

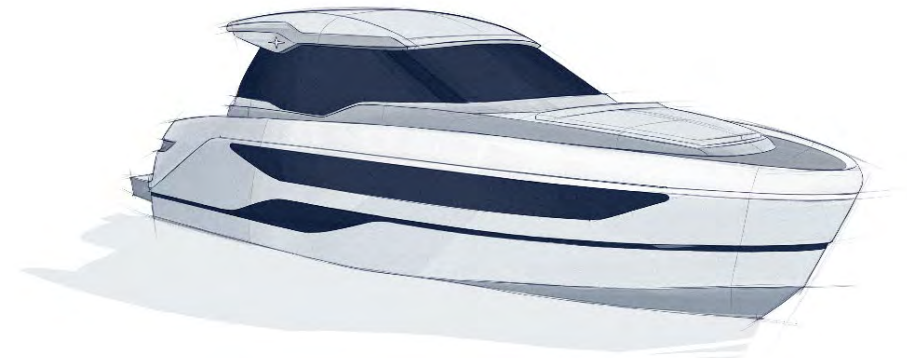
4.1 Systems Overview	50
4.2 Climate Interior	51
4.3 Climate Exterior	52
4.4 Multimedia	53
4.5 Engines	54

1.1 STORY

BAVARIA SR36...

After the BAVARIA SR41, the BAVARIA SR36 will celebrate its world premiere in January 2022. Together with the BAVARIA development team, the Italian designer Marco Casali drew up the sporty, elegant lines of the motor yacht, which is 11.68m long and 3.89m wide and boasts a bathing platform as standard. Particularly striking are the sweeping hull shape, large window areas in the superstructure and plenty of space on the bow and stern.

“The BAVARIA SR36 is the continuation of our new SR-LINE. The BAVARIA SR41’s great success confirmed to us that we understand our customers’ desires and are able to successfully implement them. With our new concepts, we can offer our customers a new attitude to life on board, as well as the advantages they have always expected from a BAVARIA product. With the BAVARIA SR36, we are taking another step in the development of the SR-LINE, and customers will be impressed with the clever optimised solutions,” explains Marc Dienes, CEO BAVARIA YACHTS.



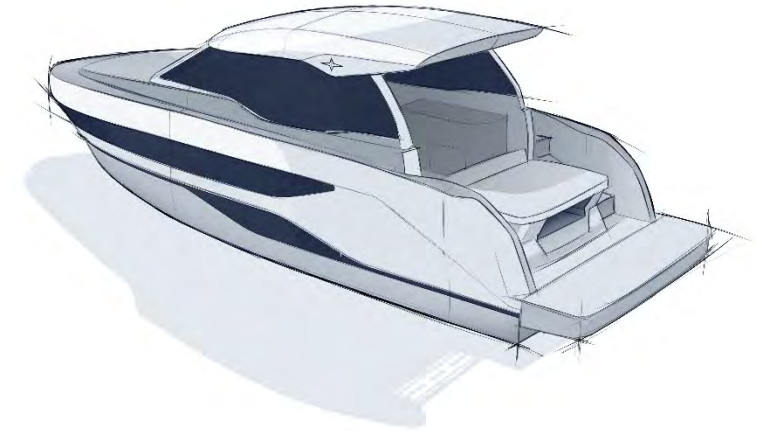
1.1 STORY

BAVARIA SR36...

The BAVARIA SR36 shows creativity in the design of the cockpit and superstructure, since life on modern motor yachts takes place primarily on deck and in the cockpit. Alongside the classic hardtop version, which can be optionally closed with a door, the BAVARIA SR36 is also available as an open version, with a low windscreen. The hardtop roof becomes a stable Bimini with a sunroof. Or simply BAVARIA Open Top, as BAVARIA YACHTS calls it. "The new Open Top version combines the comfort of a hard top with the sporty appeal and handling sensation of an open yacht," explains Marco Casali of this unique new concept.

Plenty of space on board the BAVARIA SR36 is provided by an intelligent floor plan, including below deck. Two generous cabins and an equally spacious lounge offer plenty of comfort and privacy for all guests on board.

"When designing the BAVARIA SR36, we deliberately started with the famous piece of blank paper. However, during the process we had a clear idea of the advantages of a BAVARIA yacht and the important design elements of the SR-LINE which we wanted to reinterpret for the BAVARIA SR36. The entirety of the interior was recreated precisely as a model in our development studio, allowing us to get a real feeling for the space, alongside the 3D computer models," says Norbert Leifeld, the product manager responsible for the development of the BAVARIA SR36 at BAVARIA YACHTS.



1.2 TEN REASONS TO BUY

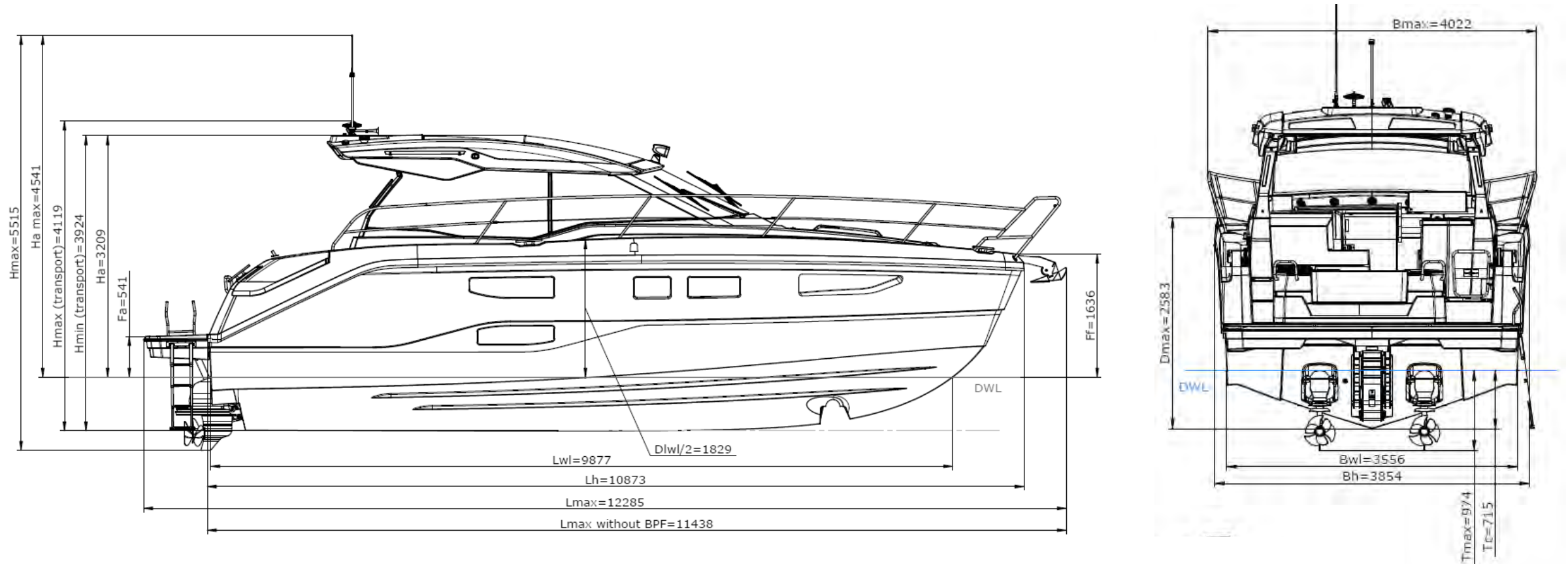
BAVARIA SR36

- Available as Hardtop with Softtop or GRP Hardtop, and as Open Top.
- Wide bathing platform in Standard, hydraulically lowerable platform as Option.
- Aft Cockpit available in three different versions: seating, sunbed and additional storage.
- Huge cockpit area with L-Seating or U-Seating and huge wetbar for having a dinner with family and friends.
- Highly functional Helmstand with co-driver seat and co-drive sunbathing area.
- Huge foreship deck upholstery area with handrails and cupholders.
- Handrails and high railing over the complete boat for maximum safety.
- Wide and comfortable companionway for easy entrance into the interior.
- Huge Aft cabin with two beds [2,00 x 0,9] or one big bed [2,00x2,00] and a separate 1,90m chaiselongue.
- Foreship cabin with island bed [1,98x1,37].
- Available with open interior layout or closed cabin layout.
- Head with separate shower and shower door.

1.2 Main Characteristics

TECHNICAL DATA	OPEN TOP	HARD TOP
Length overall	11,44 m	11,44 m
Length overall incl. bathing platform	12,28 m	12,28 m
Length hull	10,87 m	10,87 m
Length waterline	9,87 m	9,87 m
Beam of hull	3,85 m	3,85 m
Height above waterline, excl. Antenna	3,21 m	3,21 m
Draught drive raised	0,71 m	0,71 m
Draught drive lowered	0,97 m	0,97 m
Dry weight [approx.]	7.900 kg	8.000 kg
Fuel tank [approx.]	500 L	500 L
Water tank [approx.]	250 L	250 L
Cabins	2	2
Head	1	1
CE category	B8 / C10	B8 / C10
LIST PRICE EX WORKS [EXCL. VAT]	229.500,00 € <input type="checkbox"/>	239.500,00 € <input type="checkbox"/>

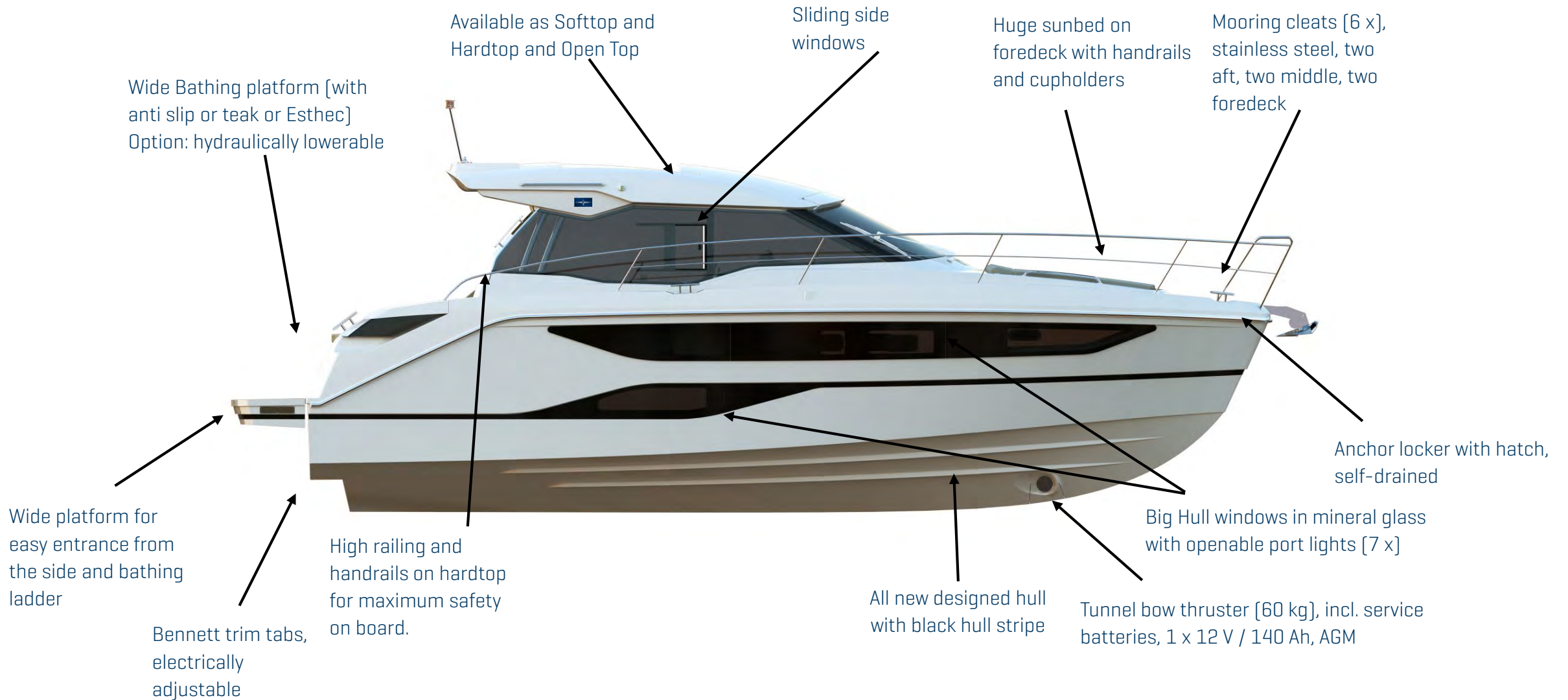
2.1 Dimensions Hull



Please see actual pricelist for details Standard and Option

2.2 Hull

Hull in hand lay-up sandwich construction



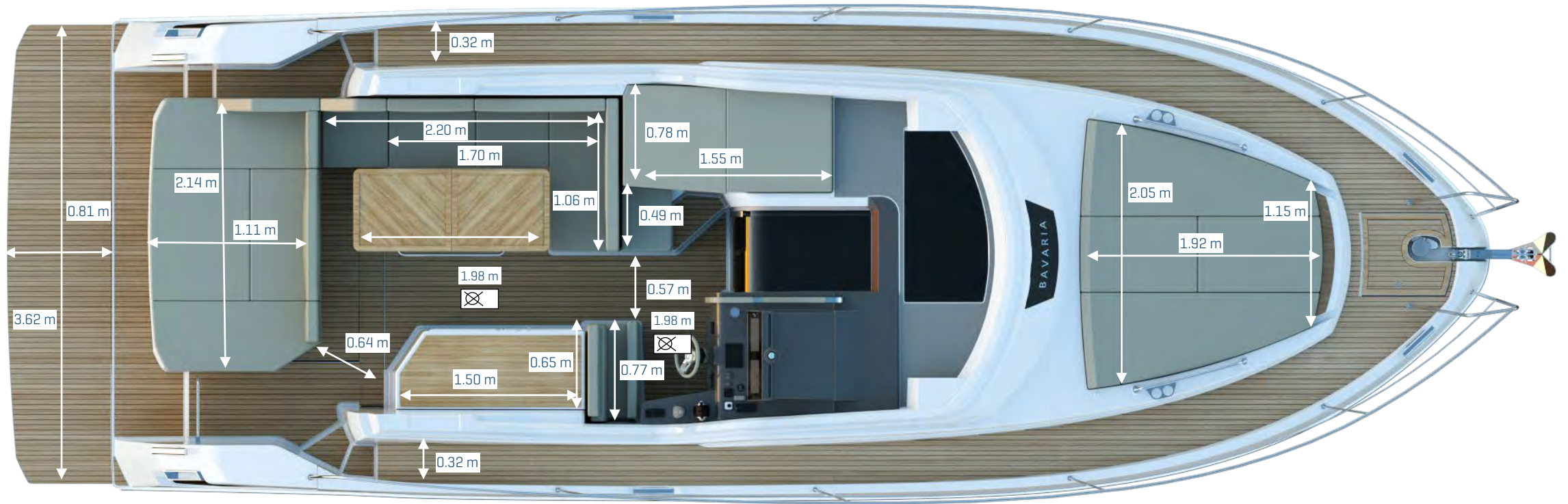
Please see actual pricelist for details Standard and Option

2.3 Deck



Please see actual pricelist for details Standard and Option

2.3 Dimensions Deck

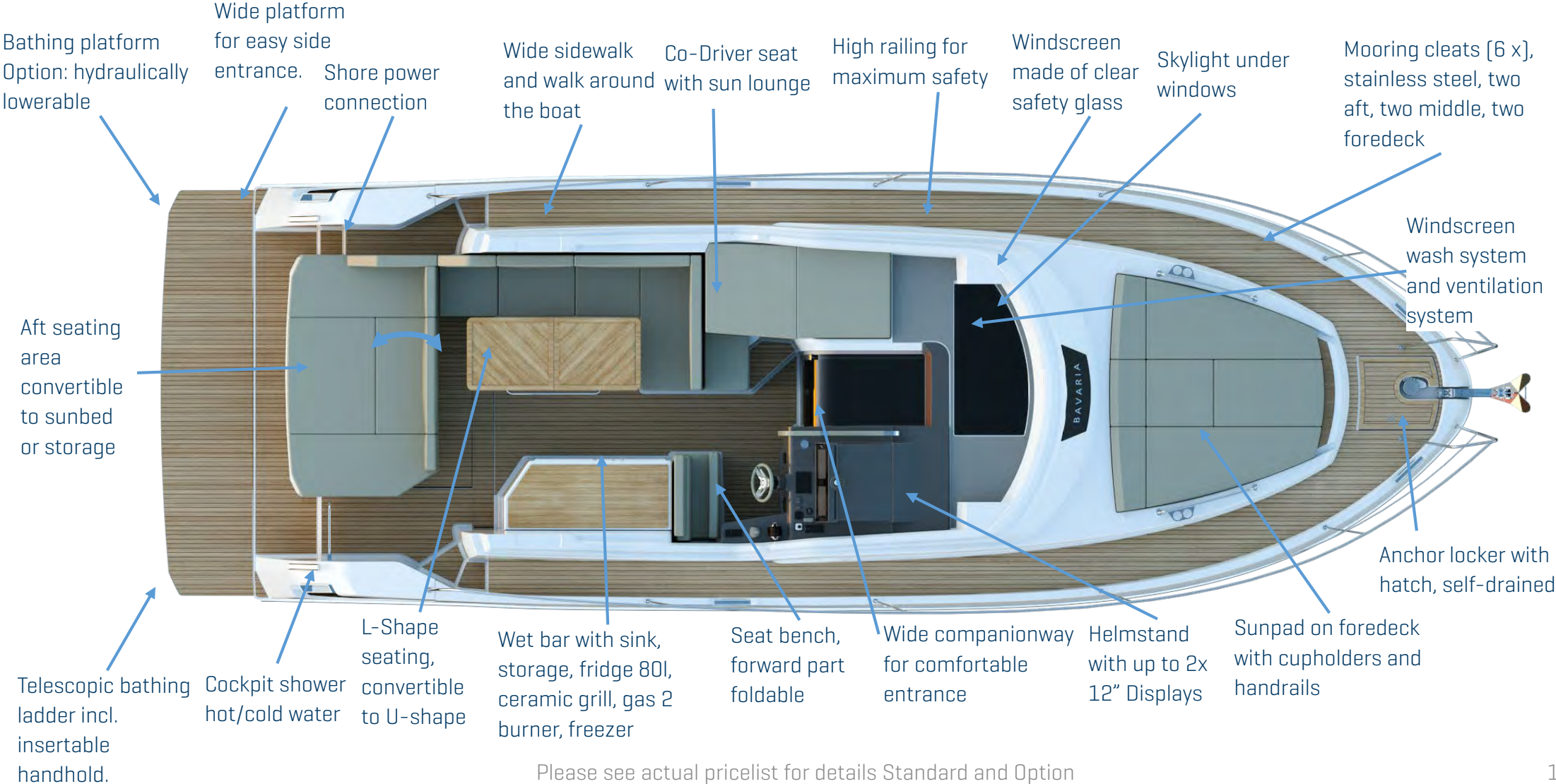


☒ Headroom

Please see actual pricelist for details Standard and Option

2.3 Deck

Deck in hand lay-up sandwich construction



Please see actual pricelist for details Standard and Option

2.4 Cockpit



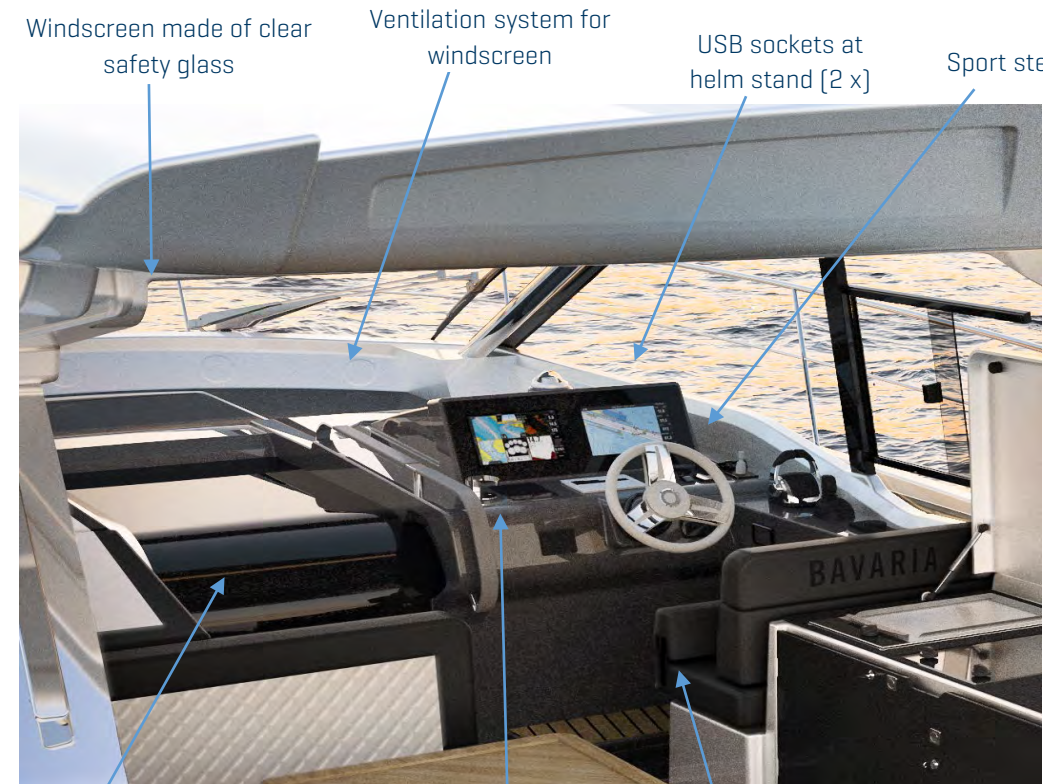
Co-pilot seat in driving direction with integrated sun lounge

Windscreen wiper with synchronous control, starboard and port

Windscreen wash system

Side windows made of tinted safety glass incl. sliding side windows

Cup holder at copilot seat, stainless steel



Windscreen made of clear safety glass

Ventilation system for windscreen

USB sockets at helm stand [2 x]

Sport steering wheel

Sliding companionway door with lock, grey tinted

Cup holder at helmstand, stainless steel

Helmstand with double seat, forward part foldable

Please see actual pricelist for details Standard and Option

2.4 Cockpit - Helmstand



Compass offshore 75

BAVARIA Information-Display, 2x12" with integrated GoFree™ Wi-Fi and Bluetooth; all-weather touch screen on main helmstation [only with Simrad OP50]

12V Subpanel helmstation

Display

USB Water protected

Micro SD Card Reader

Mobile phone charger at helm stand 10-30V

Search light joystick bow thruster control

Bennet Trim tabs control

Throttle

Joystick [optional]

Simrad OP50 remote control for Multifunction Display

Simrad RS40 VHF with in built AIS Receiver + Simrad HS40 wireless handset

Volvo-Penta twin panel

Whiper panel

Heating control panel



Lights	
1	Cabin light
2	Cockpit light
3	Anchor light
4	Engine compartment light
5	Underwater lights
6	Frei
Systems	
1	Fresh water pump
2	Engine compartment fan
Navigation	
1	Navigation lights
2	Navigation instruments
3	Horn
4	Hifi
5	
6	

Note: Pictures from SR41, but same Concept on SR36

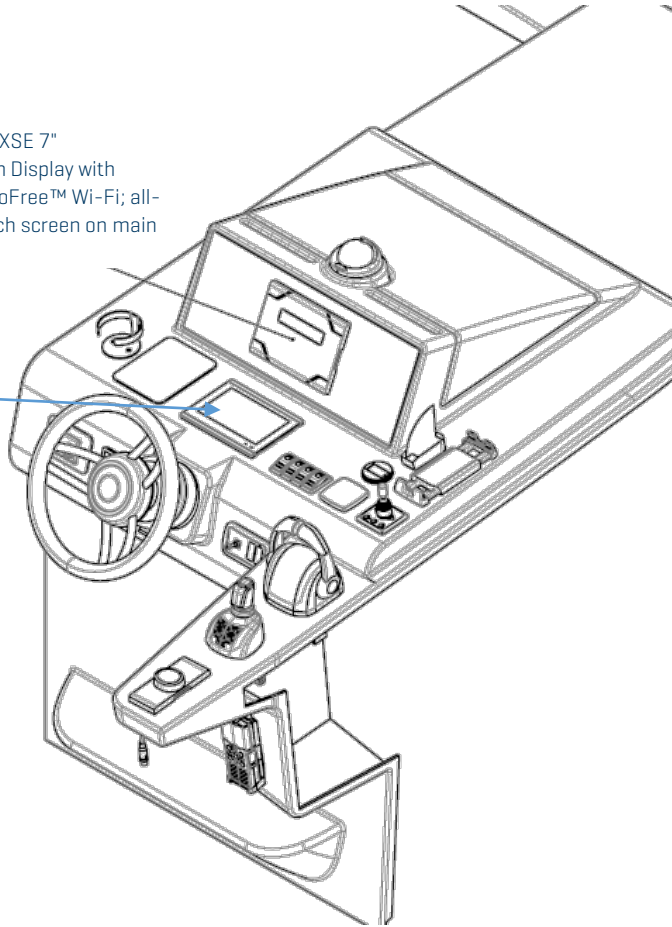
Please see actual pricelist for details Standard and Option

2.4 Cockpit - Helmstand



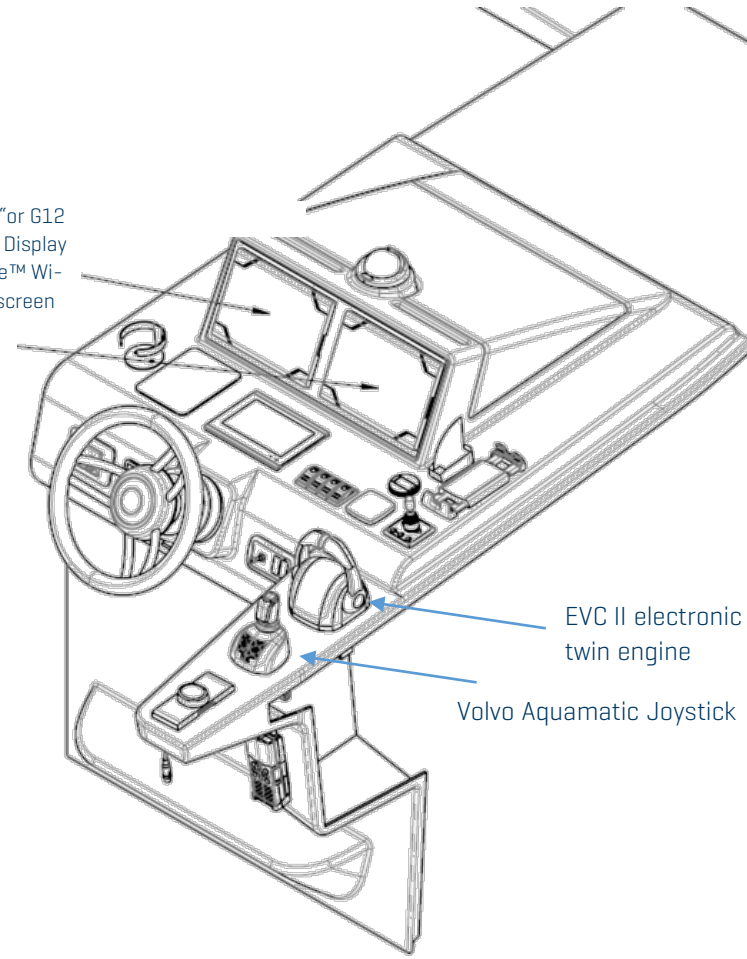
Simrad G07 XSE 7"
Multifunction Display with
integrated GoFree™ Wi-Fi; all-
weather touch screen on main
helmstation

Digital multi-functional Volvo
MFD B7 display giving, current
and average fuel consumption
plus engine information

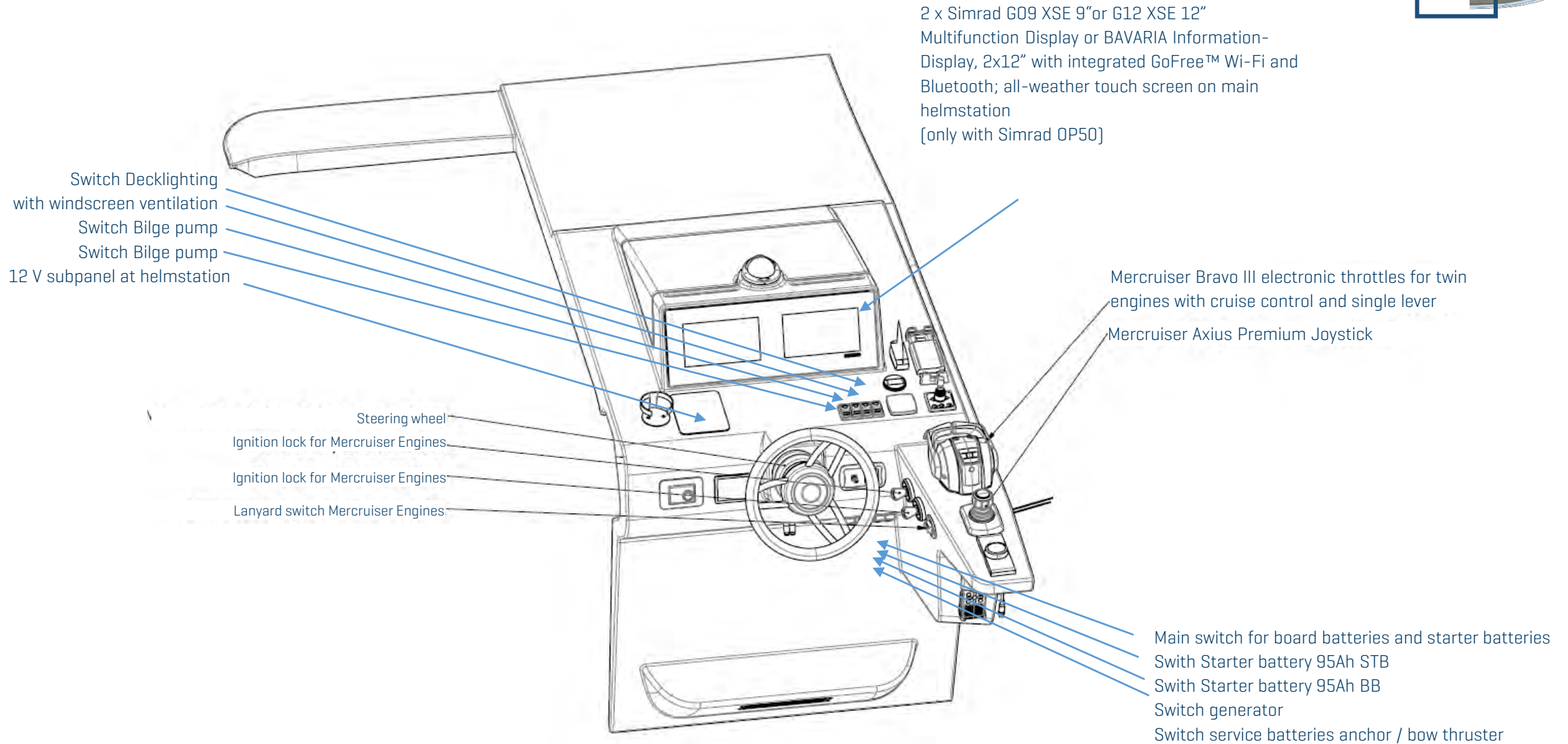


2 x Simrad G09 XSE 9" or G12
XSE 12" Multifunction Display
with integrated GoFree™ Wi-
Fi; all-weather touch screen
on main helmstation

EVC II electronic throttles for
twin engine
Volvo Aquamatic Joystick



2.4 Cockpit - Helmstand



2.4 Cockpit



Settee at wetbar with fixed table and upholstery

GRP deck HT innerliner, Signal White [only Hardtop and Softtop]

Covered ceiling panels in upper salon [only with GRP sunroof]



Additional seat between wetbar- and stern settee

Settee at stern incl. upholstery and swiveling backrest

Cockpit lighting

Ceramic cook top, electric or Gas cook top, 2 burner

Cockpitgrill, electric or Cockpitgrill, gas

Storage box in wetbar

Wetbar with sink and cover



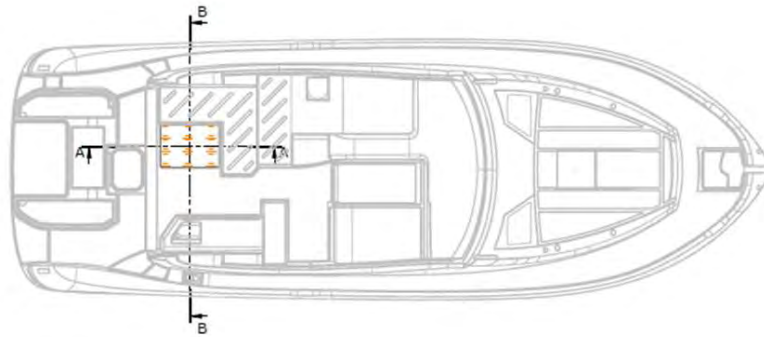
Refrigerator in wetbar, 12 V, 80 liter

Storage drawers in wetbar with lock

Freezer drawer, 55 L

Worktop, black

2.4 Cockpit - Tables



Settee at wetbar with fixed table

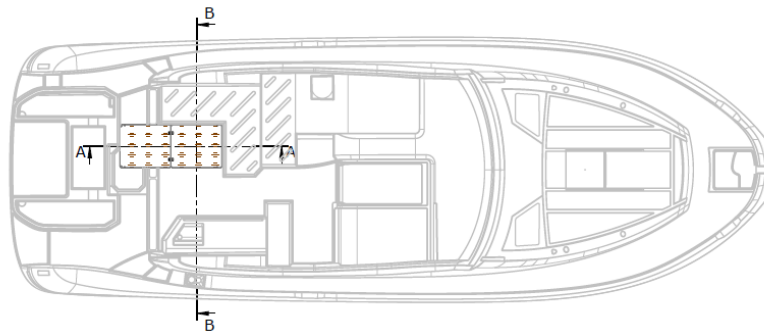
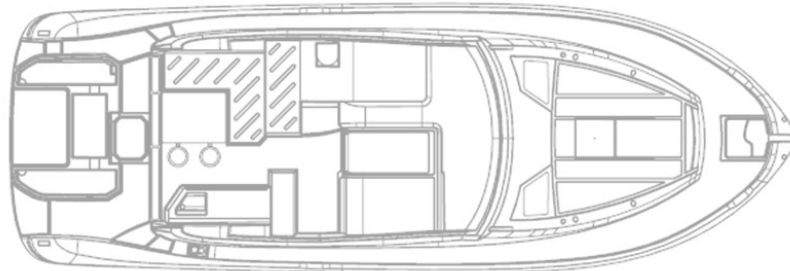
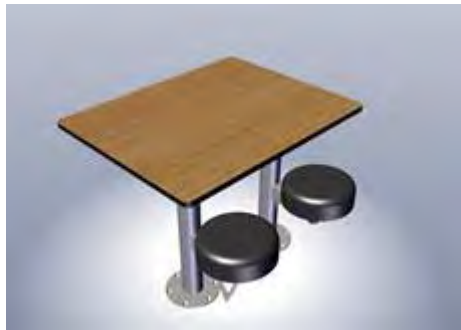


Table for settee at wetbar, foldable
[only for HT without Patio Door]



High quality cockpit table with telescope stools
[only with Patio Door]

Note: Pictures from SR41, but same Concept on SR36

Please see actual pricelist for details Standard and Option

2.4 Cockpit – Stern Area



Settee at stern incl. upholstery and swiveling backrest



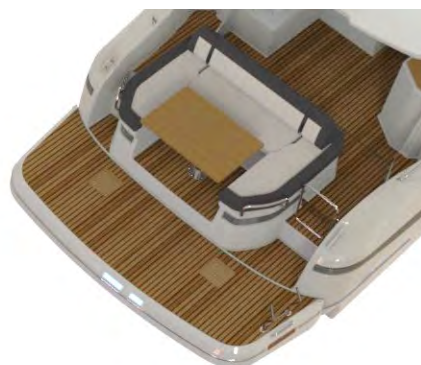
Table for stern settee manually lowerable with upholstery [not with GRP storage box]



Table for stern settee manually lowerable with upholstery [not with GRP storage box]



GRP storage box for stern settee [not with table for stern settee]



Note: Pictures from SR41, but same Concept on SR36

Please see actual pricelist for details Standard and Option

2.5 Anchor

- Anchor locker with hatch, self-drained
- Bow fitting with anchor roller, stainless steel
- Windlass, electric [only with bow thruster]
- Remote control with chain counter wireless



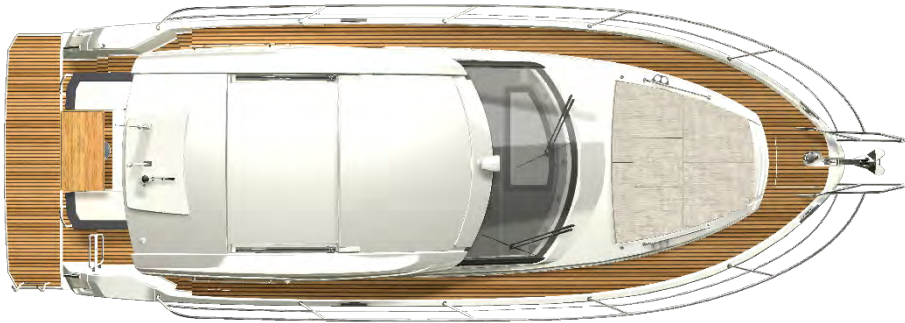
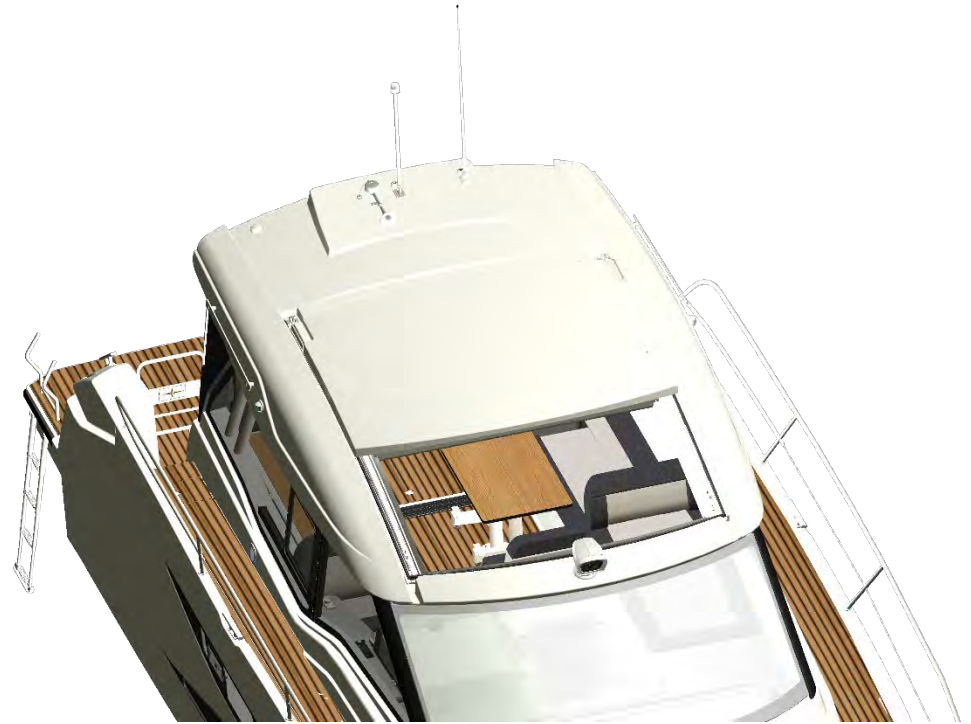
Anchor 16 kg incl. chain [8 mm, 50 m], galvanized [only with windlass]



Anchor 16 kg incl. chain [8 mm, 50 m], stainless steel [only with windlass]



2.6 Hardtop – Electrical Hardtop



Please see actual pricelist for details Standard and Option

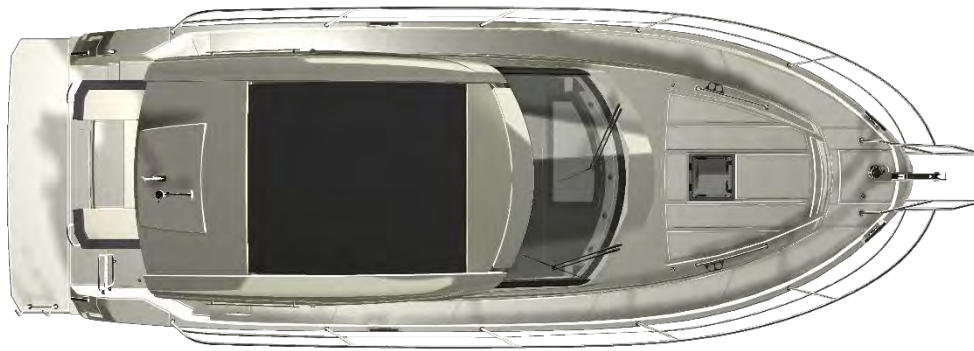
2.6 Hardtop – Manual or Electrical Softtop



Closed Softtop



Open Softtop



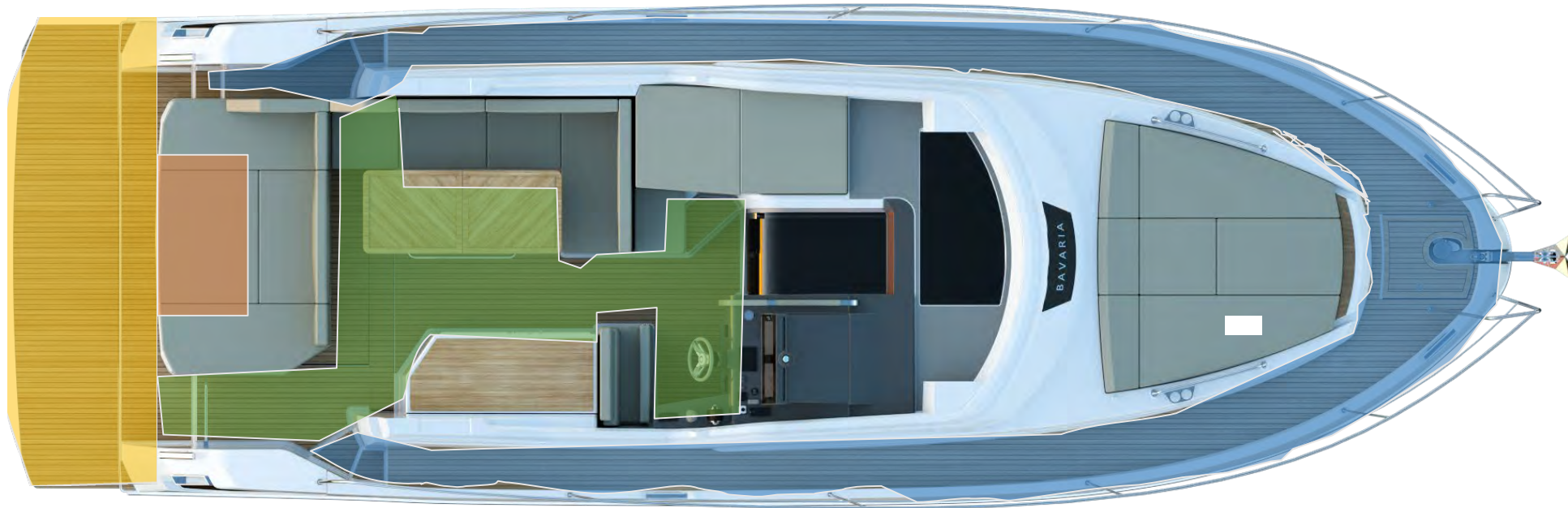
2.7 Patio door, grey tinted safety glass







- Grey tinted safety glass
- 3-Sliding doors
- Opening to both sides. (all doors to starboard or portside)
- Handle with key lock and lock in position.
- Covered ceiling panels with LED Stripes in upper salon (only with electric GRP sunroof and patio door)

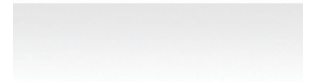


2.8 Deck flooring

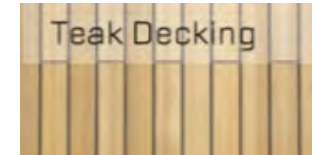


-  Bathingplattform: Standard non-slip. Optional Teak or Esthec
-  Cockpit: Standard non-slip. Optional Teak or Esthec
-  Side Decks: Standard non-slip. Optional Teak or Esthec
-  Stern settee: Standard non-slip. Optional Teak or Esthec

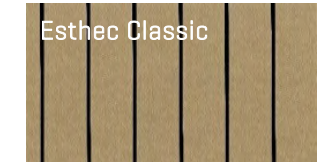
NON-SLIP
GELCOAT WHITE



Teak Decking



Esthec Classic

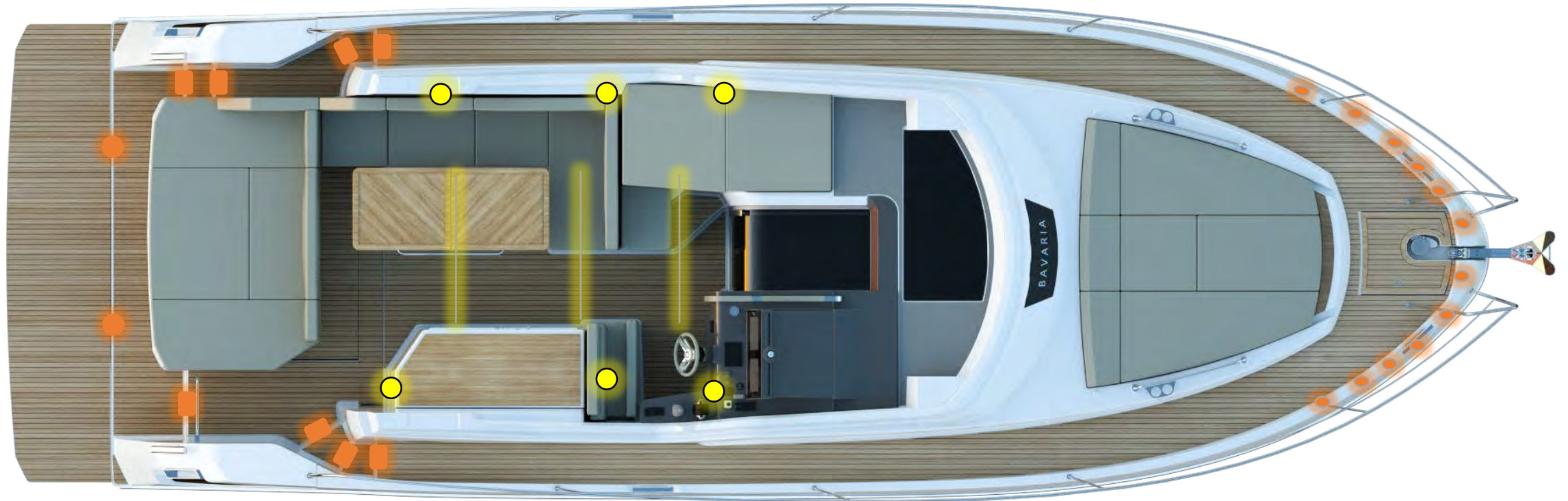


Esthec Trend



Please see actual pricelist for details Standard and Option

2.9 Deck – Lightning plan



Standard

- LED Lights Cockpit
- LED Lights Hardtop (GRP HT)
- LED Stripes Coupe (GRP HT)
- LED B-Pillar

Lighting package exterior

- LED Lights steps
- LED Lights side deck lighting
- Underwater lights

Please see actual pricelist for details Standard and Option

2.10 Deck – Upholstery Exterior



STONE



SAND

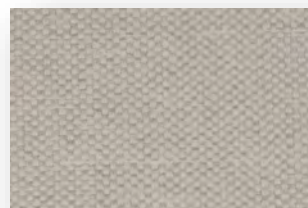
Maglia



Maglia Breeze

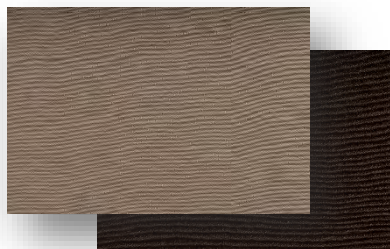


Maglia Granite

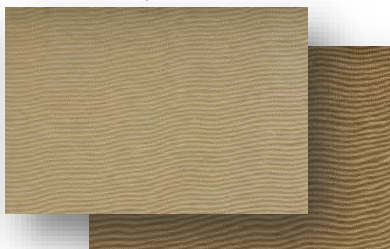


Maglia Uyuni

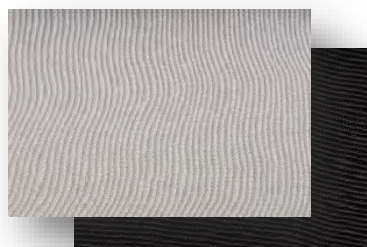
Suntex



SUNTEX
Sandstone/ Mocca

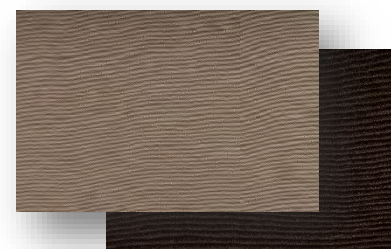


SUNTEX
Champagne/ Beige

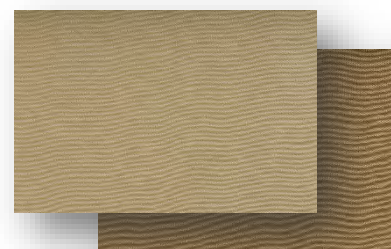


SUNTEX
Ice/ Carbon

Suntex with Diamond Stitching



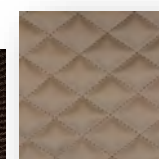
SUNTEX
Sandstone/ Mocca



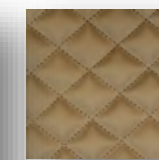
SUNTEX
Champagne/ Beige



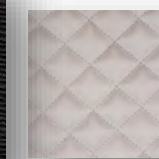
SUNTEX
Ice/ Carbon



Option
"Diamond Stitching"



Option
"Diamond Stitching"



Option
"Diamond Stitching"

Please see your "BAVARIA Motorboats Upholstery Sample Book" for exact colour and material.

Please see actual pricelist for details Standard and Option

2.11 Hoods – Covers

Bimini



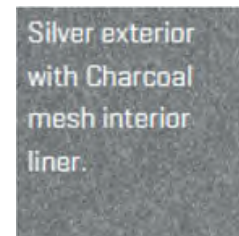
Camper Cover



Mooring cover



Fabric HT Softtop



- Pictures of Biminis and Campercovers will follow as soon as they are first installed on a boat.
- Bild Campercover Hardtop nach Erstverbau (Februar)
- Bild Bimini Aft nach Erstverbau (Februar)
- Bild Bimini Foreship nach Erstverbau (tbd)
- Bild Campercover Open (PT#2)

3.0 Interior

3 Interior

- 3.1 General Dimensions
- 3.2 Aft Cabin
- 3.3 Head & Shower
- 3.4 Pantry
- 3.5 Salon
- 3.6 Foreship Cabin
- 3.7 Upholstery
- 3.8 Wood
- 3.9 Lightning plan
- 3.10 Sockets & Switches



3.1 Interior - General Dimensions

Layout "Separate Cabin" in foreship



Please see actual pricelist for details Standard and Option

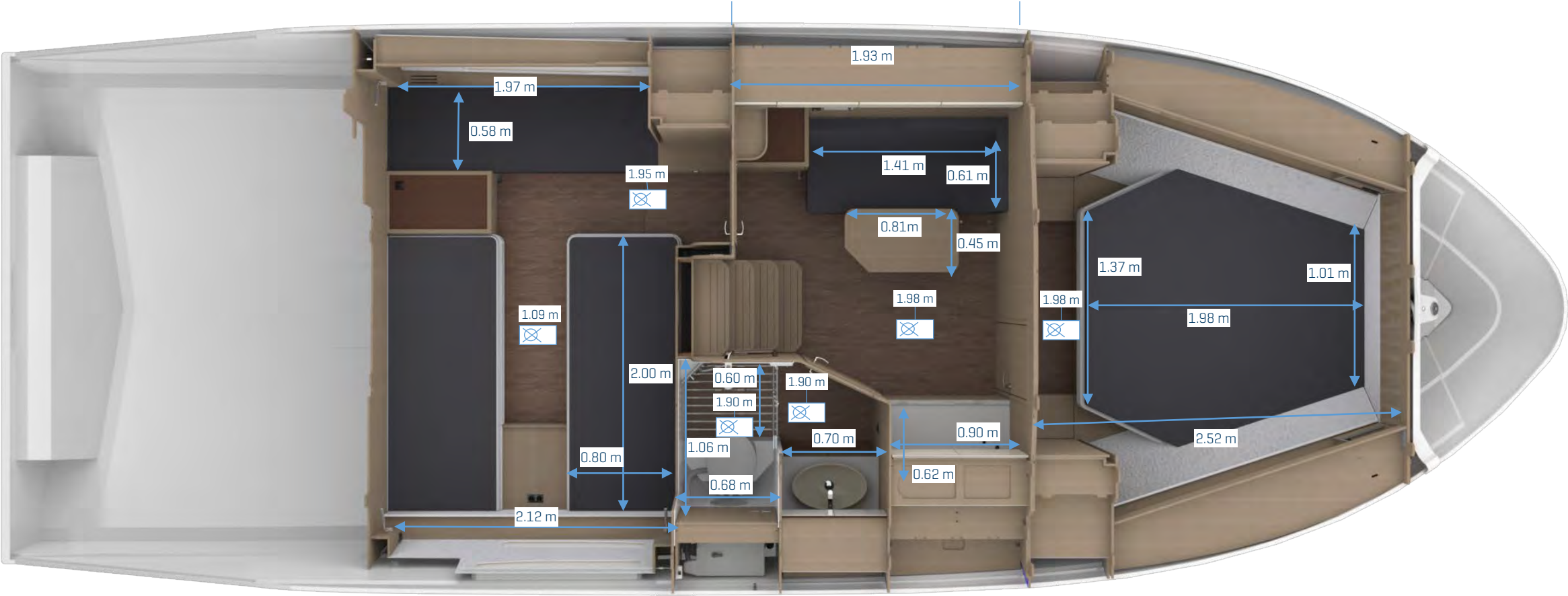
3.1 Interior - General Dimensions


Layout "Open Space" in foreship



Please see actual pricelist for details Standard and Option

3.1 Interior - General Dimensions



 Headroom

Please see actual pricelist for details Standard and Option

3.2 Interior – Aft Cabin

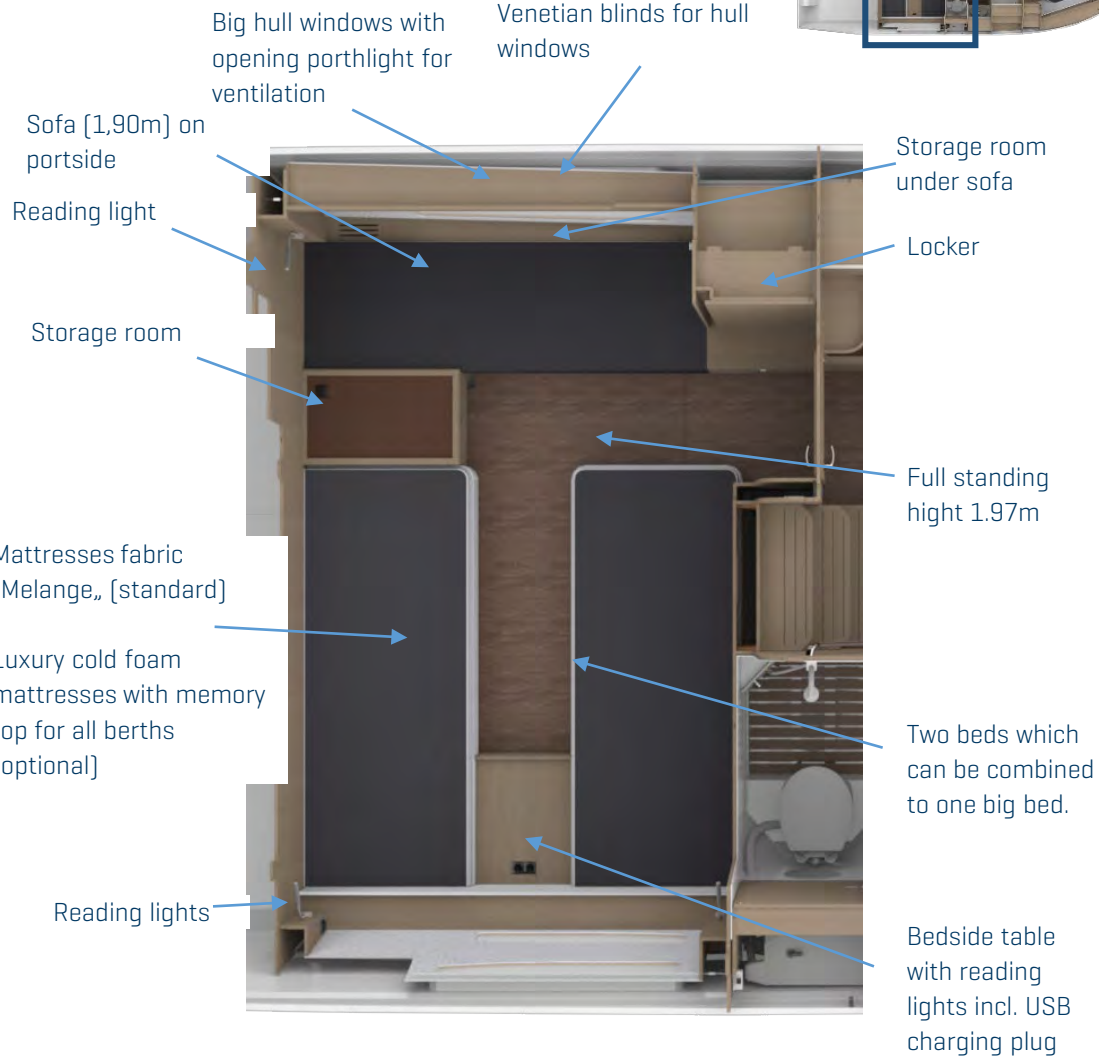


Covered ceiling panels in salon, vinyl

Fabric covered panels

Mirror

Sideboard with locker



Big hull windows with opening porthlight for ventilation

Venetian blinds for hull windows

Sofa [1,90m] on portside

Storage room under sofa

Reading light

Locker

Storage room

Full standing high 1.97m

Mattresses fabric "Melange,, [standard]

Luxury cold foam mattresses with memory top for all berths [optional]

Two beds which can be combined to one big bed.

Reading lights

Bedside table with reading lights incl. USB charging plug

3.2 Interior – Aft Cabin



Furnitures White Oak with Floor Wenge



Furnitures White Oak with Floor Wenge

3.2 Interior – Aft Cabin

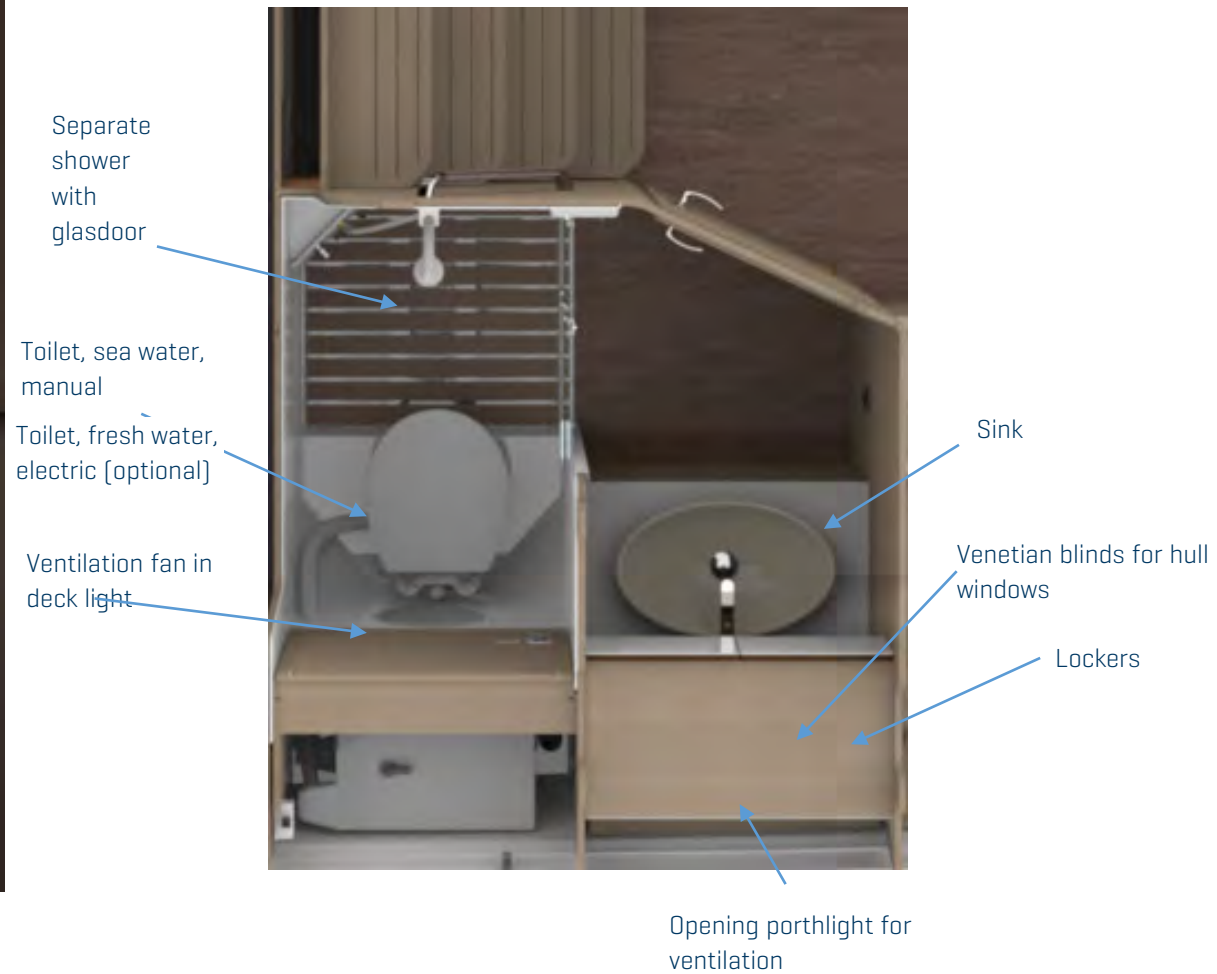


Furnitures Walnut with Floor Elm



Furnitures Walnut with Floor Elm

3.3 Interior – Head



Please see actual pricelist for details Standard and Option

3.3 Interior – Head



Furnitures White Oak with Floor Wenge



Furnitures Walnut with Floor Elm

Please see actual pricelist for details Standard and Option

3.4 Interior – Pantry



Refrigerator, 80 liters

Work top, Black

Work top, high quality "Crispy Milk" (option)

Opening porthlight for ventilation

Storage

Sink in stainless steel, with cover

Overhead lockers

TV under Lockers

Venetian blinds for hull windows

3.4 Interior – Pantry



Furnitures Walnut with Floor Elm



Furnitures White Oak with Floor Wenge

3.4 Interior – Pantry

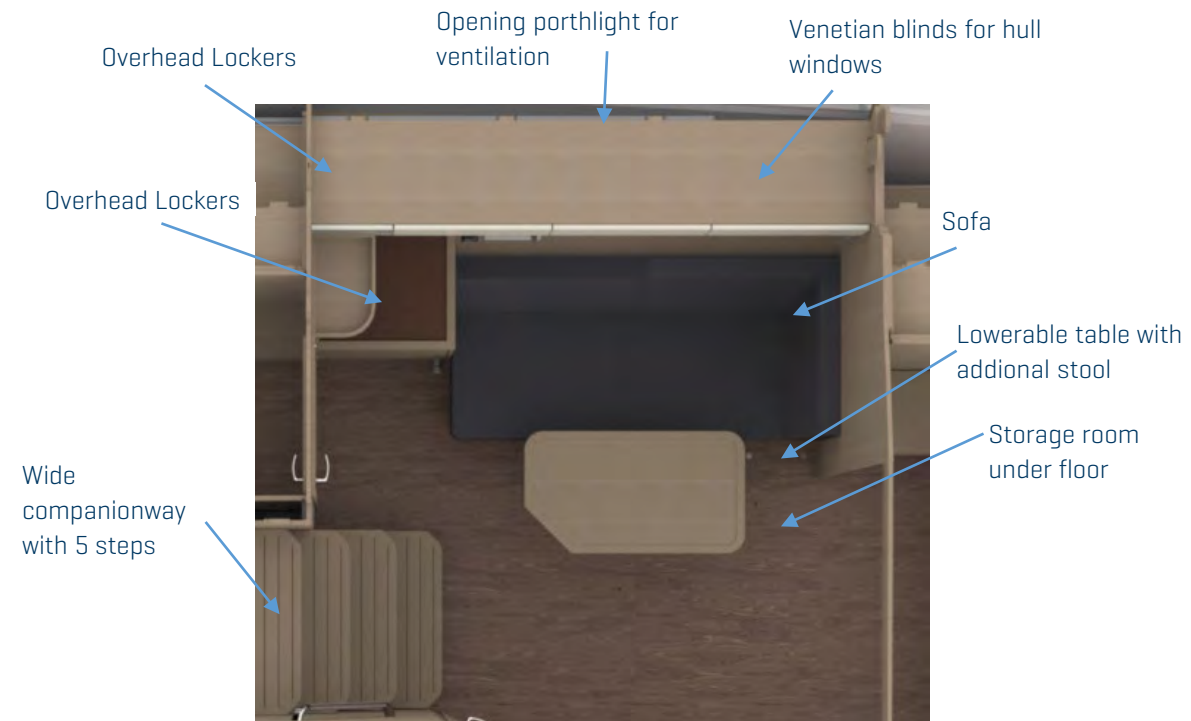


Open Interior: Furnitures Walnut with Floor Elm



Open Interior: Furnitures White Oak with Floor Wenge

3.5 Interior – Salon



3.5 Interior – Salon



Furnitures Walnut with Floor Elm



Furnitures White Oak with Floor Wenge

3.5 Interior – Salon



Open Interior: Furnitures Walnut with Floor Elm



Open Interior: Furnitures White Oak with Floor Wenge

3.6 Interior – Foreship cabin



Deck hatch to open for forward cabin incl. blind for hatch

Covered ceiling panels in salon, vinyl



Storage locker

Opening porthlight for ventilation

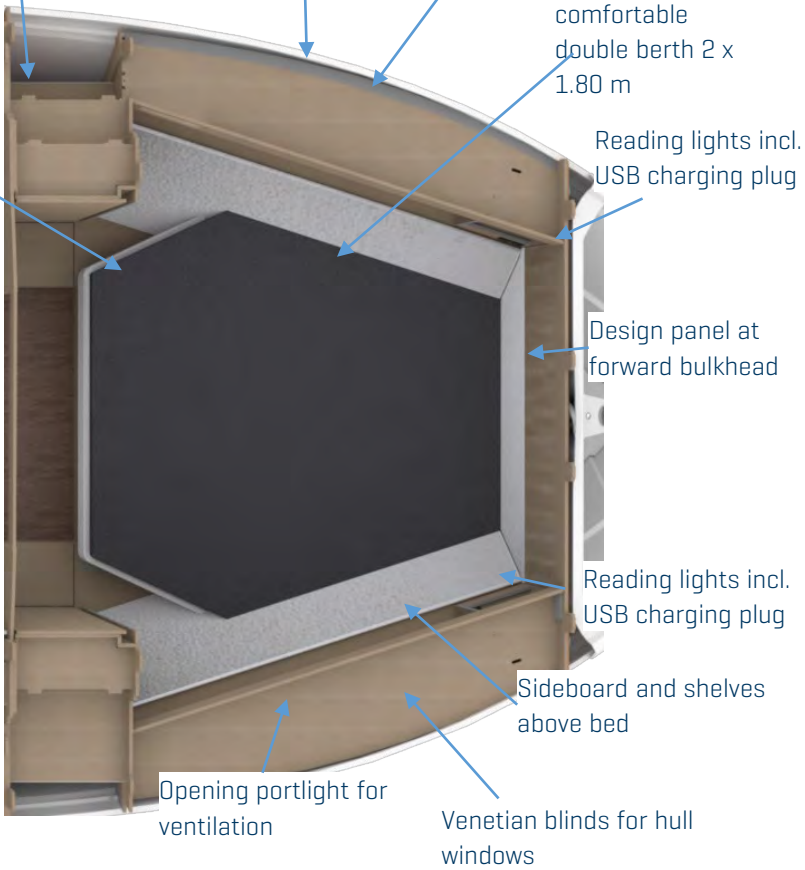
Venetian blinds for hull windows

Mattresses fabric "Melange,, [standard]

Luxury cold foam mattresses with memory top for all berths [optional]

comfortable double berth 2 x 1.80 m

Reading lights incl. USB charging plug



Design panel at forward bulkhead

Reading lights incl. USB charging plug

Sideboard and shelves above bed

Opening porthlight for ventilation

Venetian blinds for hull windows

3.6 Interior – Foreship cabin



Furnitures Walnut with Floor Elm



Furnitures White Oak with Floor Wenge

3.7 Interior – Upholstery



Comfort Fabric



Melange



Natural



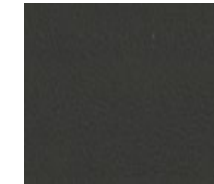
Marine



Opus Leatherette



Oyster



Grey

Savoy Leather



Ivory



Chocolate

Please see your "BAVARIA Motorboats Upholstery Sample Book" for exact colour and material.

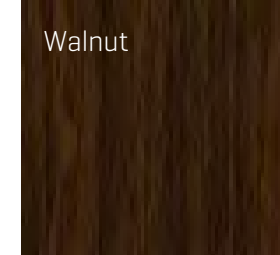
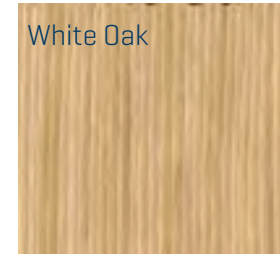
Please see actual pricelist for details Standard and Option

3.8 Interior – Wood

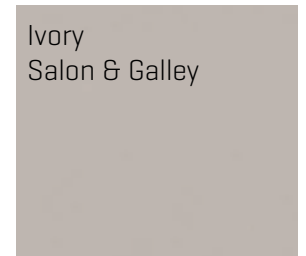
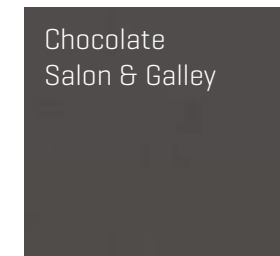
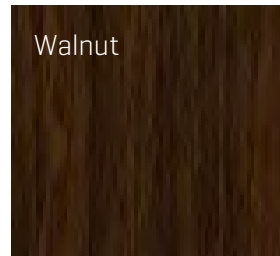
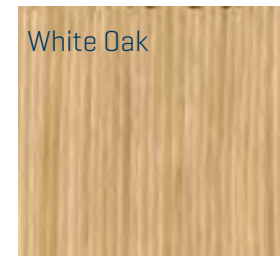


Please see your "BAVARIA Motorboats Upholstery Sample Book" for exact colour and material.

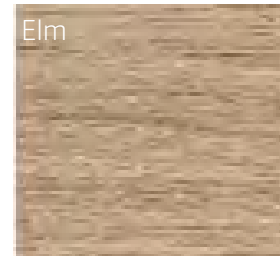
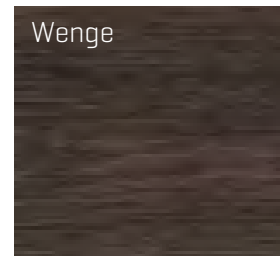
Interior Wood



Overhead locker doors



Floor



Carpet



Please see actual pricelist for details Standard and Option

3.9 Interior – Lightning plan



Standard

- LED Lights
- LED Lights [GRP HT]
- LED Stripes dimmable
- LED Stripes non dimmable
- ▣ Reading lights




Lighting package Interior

- LED Stripes dimmable

Please see actual pricelist for details Standard and Option

3.10 Interior – Sockets and switches



-  AC socket
-  12V socket
-  Light switch

Please see actual pricelist for details Standard and Option

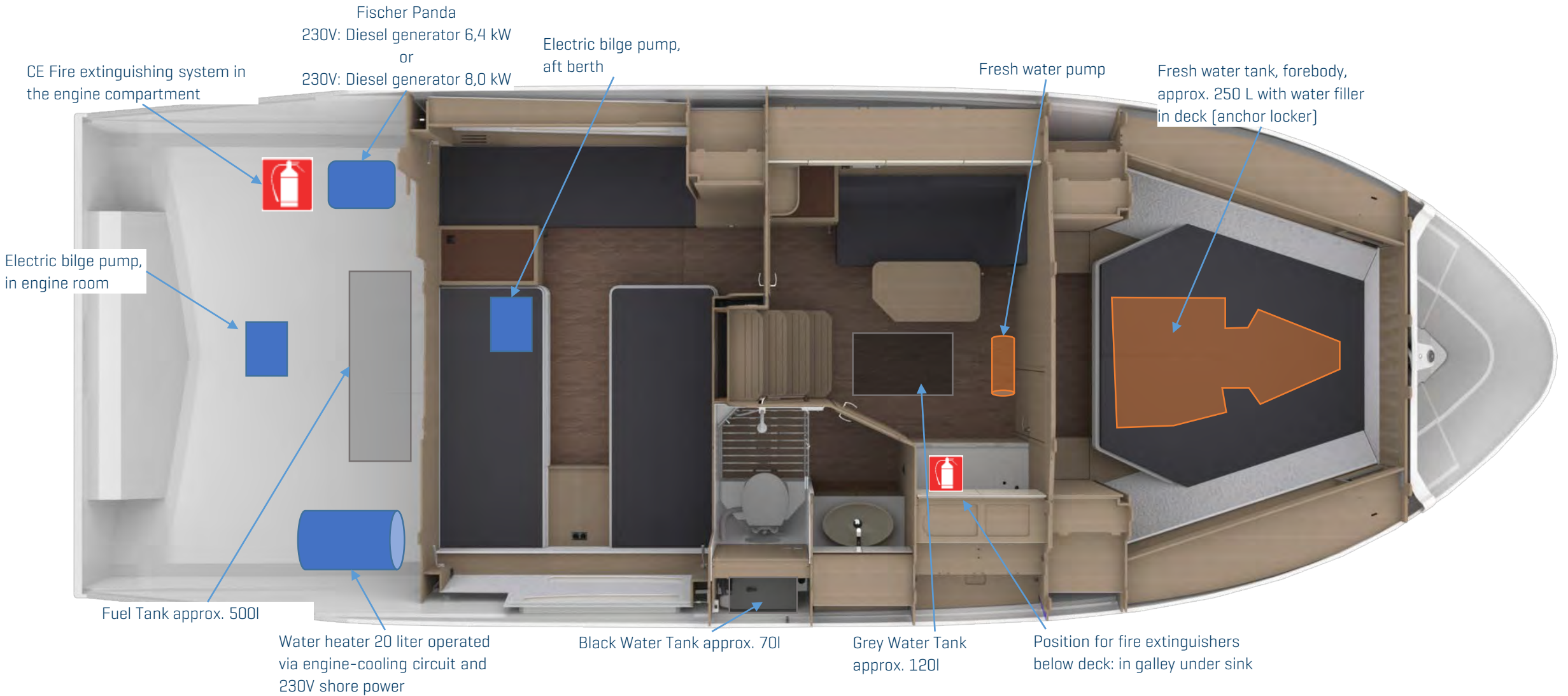
4.0 Systems

4 Systems

- 4.1 Systems overview
- 4.2 Climate Control Interior
- 4.3 Climate Control Exterior
- 4.4 Multimedia
- 4.5 Engines



4.1 Systems overview



Please see actual pricelist for details Standard and Option

4.2 Climate Control - Interior

[Air conditioning and hot air heating cannot be combined]

Hot air heating, 4,0 kW, 1 Unit for salon, foreship cabin and aft cabin. Unit position under Wetbar in Cockpit [for gasoline engine only with additional diesel tank 40 L]
Webasto: Air Top Evo 40 HG AT

Air Conditioner, Reverse Cycle, 24.000 BTU, 2 Units for salon, foreship cabin [16.000 BTU], aft cabin [8.000 BTU] incl. 2nd shore power, 230V / 110V
Webasto BlueCool S Series



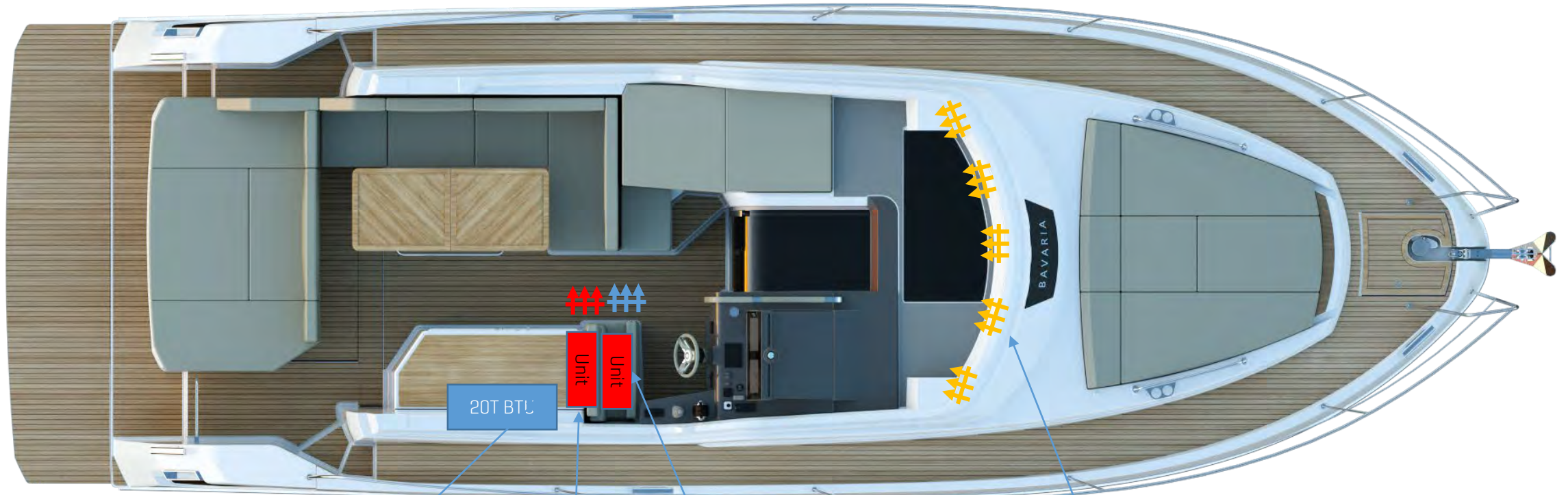
Additional diesel tank per 4 kW hot air heating, 40 liter [available only for gasoline engines]

Air Conditioner, Reverse Cycle, 24.000 BTU, 2 Units for salon, foreship cabin [16.000 BTU], aft cabin [8.000 BTU] incl. 2nd shore power, 230V / 110V
Webasto BlueCool S Series

Please see actual pricelist for details Standard and Option

4.3 Climate Control - Exterior

[Air conditioning and hot air heating cannot be combined]



Air Conditioner, Reverse Cycle, 44.000 BTU, 3 Units for salon, foreship cabin [16.000 BTU], aft cabin [8.000 BTU] and cockpit [20.000BTU], incl. 2nd shore power, 230V / 110V
Webasto BlueCool S Series

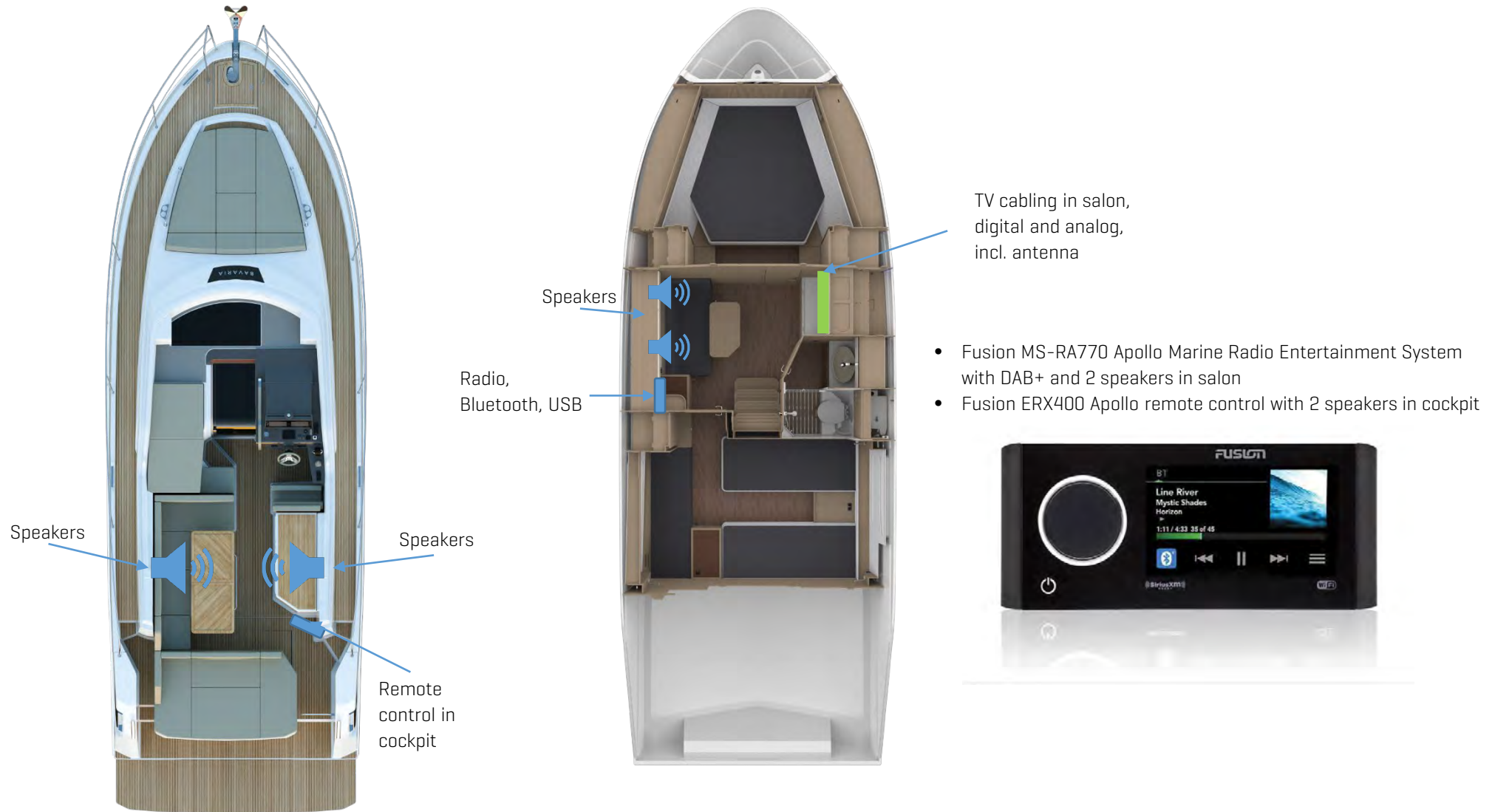
Hot air heating, 4,0 kW, 1 Unit for salon, foreship cabin and aft cabin [for gasoline engine only with additional diesel tank 40 L]
Webasto: Air Top Evo 40 HG AT

Hot air heating, 4,0 kW, 1 Unit for cockpit incl. ventilation system for windscreen [for gasoline engine only with additional diesel tank 40 L]
Webasto: Air Top Evo 40 HG AT

Outlets for AC, heater or defroster / ventilation on windscreen

Please see actual pricelist for details Standard and Option

4.4 Multimedia



Please see actual pricelist for details Standard and Option

4.5 Engines

GASOLINE ENGINE



6.2L -350- DTS EC / Bravo 3
[2 x 350 hp / 2 x 261 kW]



V8-350-CE / DPS 5.3L
[355 mhp / 261 kW]

DIESEL ENGINE



D4-300 EVC II / DPI
[300 mhp / 221 kW]

Disclaimer

This Sales Manual is intended for advertisement only and is not part of a contract, warranty or of any offer.
We reserve the right to modify or improve our products and to change specifications without notice.
Some of the images and renderings. These can differ in detail from the final product. They also contain optional equipment.
We are not liable for errors and printing mistakes.

Version: **1/2022**
Valid from **1st of January, 2022**

Please see actual pricelist for details Standard and Option

