



# TECHNICAL SPECIFICATIONS: SUNPOWER SOLAR-E SAIL 82



Up to 12 Persons + crew

Classification: Europe, CE (Category A)

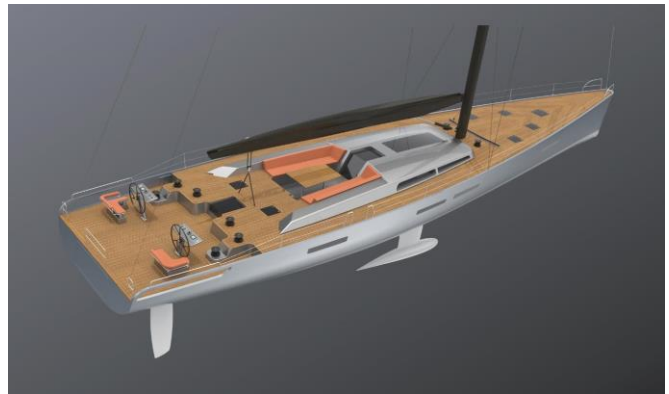
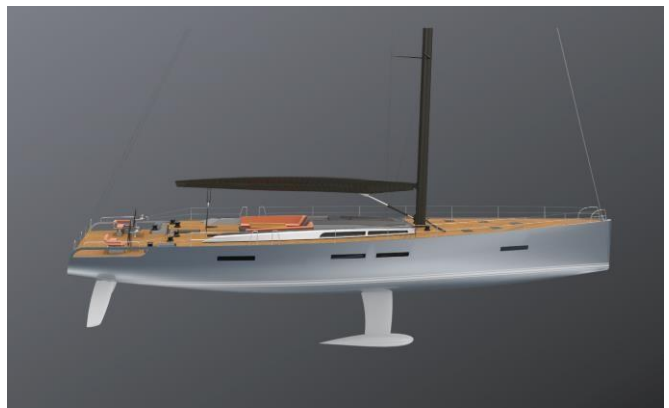
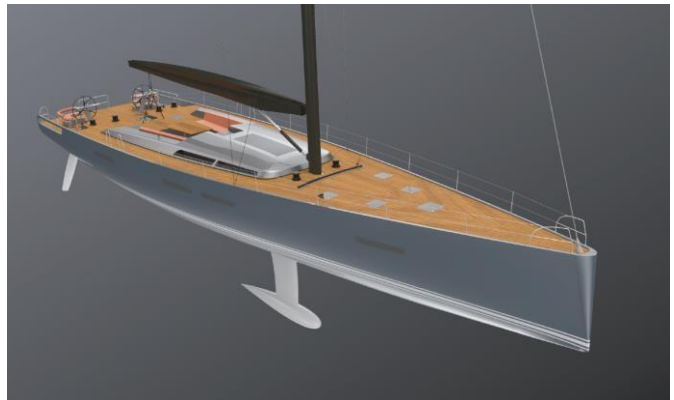
## **Technical Data**

Length Overall: 24.90 m  
Length of waterline: 22.10 m  
Beam: 5.98 m  
Draft: 3.60 m  
Ballast: 12,680kg  
Displacement: 42,000kg

Electric Propulsion: 135 kW  
Battery capacity: 140 kWh  
Fresh Water: 1000 L  
Hot water: 2x 50 L  
Blackwater Tank: 2x 200 L  
Greywater Tank: 2x 300 L  
Generator: 40 kW, DC  
Photovoltaic: 4,8kWp

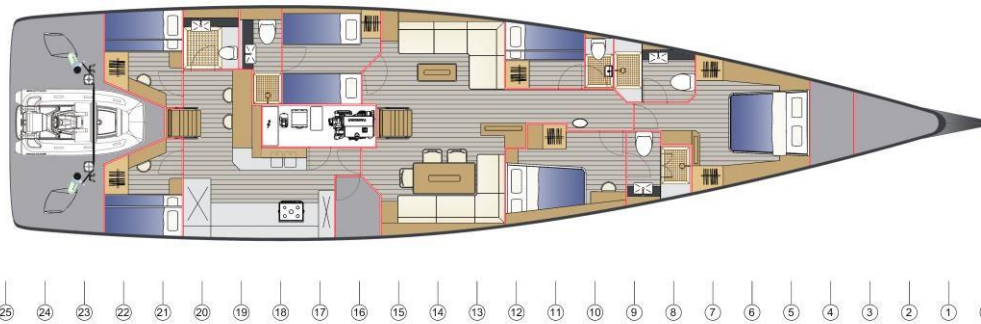
Shore Power: 6 kVA 230 V  
Air-conditioning: 76000 BTU

Mainsail: 148m<sup>2</sup>  
Self-tacking Jib: 130m<sup>2</sup>  
Genoa (optional): 152m<sup>2</sup>  
Gennaker: 395m<sup>2</sup>

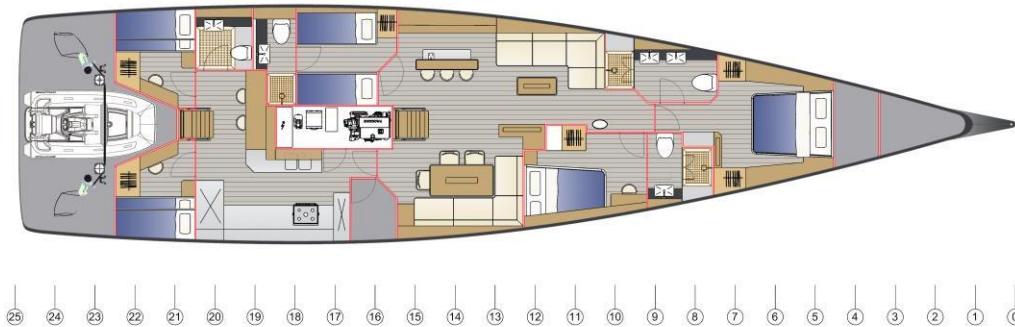


Design: Sunpower Yachts International  
Naval architecture: Sunpower Yachts International

## Layout



**Charter Version** 1 Owners Cabin bow - 1 VIP Cabin Bow - 1 Port Cabin guest bunks - 1Port guest cabin convertible - 2 crew cabins stern



**Owners Version** 1 Owners Cabin bow - 1 VIP Guest in the Bow - 1 Port Cabin convertible - 2 Crew Cabins stern

## Standard Specification

### CONSTRUCTION

- The hull and structural bulkheads are made of vacuum infused sandwich GRP and are carbon fibre reinforced
- Non-structural bulkheads are made of vacuum infused core sandwich
- Carbon fiber reinforcements on hull as well as on every bulkhead area that need extra strength
- Watertight bulkheads forward and aft. Bulkheads are laminated and/or bonded to hull and deck
- The Deck made of composite GRP with Carbon reinforcement
- The entire structure is certified by Swiss Lloyd classification society
- White paint finish on the hull, white finish on the deck (waterline colour to be specified with order)
- Main deck is laid with artificial teak or with modified wood
- Cockpit floor and seats are laid with modified wood or artificial teak
- Keel fitted to the hull with stainless steel bolts
- Twin-hanging rudders with vacuum infused rudder blades, stainless steel rudderstocks
- Push rods on rudder-quadrant
- Opening transom /swim platform giving access to tender garage
- Photovoltaic panels with 4,8 kWp over guest cockpit, saloon roof and helm station

### DECK HARDWARE

- Fixed anchor davit, electrical windlass, stainless-steel anchor and chain (60 m, 14 mm)
- Stainless steel pushpits and pulpit
- LED navigation lights.
- Double stainless-steel lifelines, opening gate in lifeline each side.
- 8 stainless steel mooring cleats and 2 fairleads
- Stainless steel recessed chainplates
- Self tacking track for genoa or staysail
- Harken (or similar) genoa sheet tracks and cars
- Recessed companionway sprayhood
- Harken turning blocks
- Jammers
- 2 x Harken (or similar) electric primary winches in cockpit
- 2 x Harken (or similar) multipurpose winches in cockpit
- 1 x Harken (or similar) electric mainsail winch in cockpit
- 2 x Harken (or similar) halyards and reef winches on deck at mast step, the starboard winch being electric.
- 2 x steering wheels with hand sewn leather covers
- Compass on each steering pedestal
- 2 x helmsman seats with console for navigation instruments, propulsion control, and bow thruster control.
- 11 flush deck hatches
- 2 flush hatches on cockpit benches (access to galley and to aft cabin).
- 2 x accesses to lazarettes from the cockpit
- 1 x access to garage from the cockpit
- 2 x accesses to life raft lockers from cockpit
- Cockpit table (option to convert it into a sunbathing area)
- Space for optional fridge
- Hot and cold shower on swimming platform

## **FOREPEAK**

- The sail locker (forepeak) is large enough to accommodate spare Sails
- Large deck hatch (with exterior lock), stainless-steel ladder.
- The equipment includes:
  - Lights
  - Handrails
  - Lines attachment points

## **TENDER GARAGE**

- The tender garage is accessible from the transom when opened and from a deck hatch located in the cockpit.
- The garage can accommodate a 3.85 m electric outboard or jet tender with electric propulsion.
- Dedicated system to help getting the tender in and out of the garage
  - The large hydraulic aft platform spread to the sea and then serve as launching ramp.
- Tender inflating electric pump.
- Self-draining garage, with natural ventilation

## **LAZARETTES**

- There is one lazarette on port and one on starboard.
- Access from cockpit or from tender garage
- Several attachment points.
- Electric bilge pump
- Access to steering mechanism and autopilot
- Light top coat finish
- Stainless steel swim ladder with teak steps integrated fixation points in the platform.

## **SPARS AND RIGGING**

- Silver anodized- black or grey painted aluminum mast, 3 sets of spreaders.  
(Carbon Mast and Boom available and recommended but Optional price)
- Stainless-steel Rod rigging (Optional price PBO rigging)
- Running rigging
- Hydraulic boom vang and backstay adjusters (two function unit in the cockpit)
- Deck lights and mooring light.
- Electric genoa and Jip furling system
- Windex

## **Propulsion**

- Gearless electric motor with 135 kW
- Sound proofed engine compartment (extra density plate).
- Stainless steel shaft with trust bearing
- Folding 4-blade propeller

- Propulsion control panel on helm console

## **Navigation**

Navigational instruments:

2 x Touch Multifunction Display

2 x Tridata incl. repeaters (wind, echo, speed, temp.)

Hydraulic Autopilot (autopilot-control, ACU computer, compass, GPS, rudder-sensor, hydr. pump and accessories)

Flir 324CS stabilised Infrared Camera (option)

Colour HD Radar

VHF + AIS Package

Satellite connection with “over-the-air” updates and troubleshooting

## **WATER**

- 1000 litres fresh water in two stainless steel tanks, located in the middle of the boat.
- Greywater Tank: 2x 300 L
- Blackwater Tank: 2x 200 L
- Pressurized hot and cold-water system.
- 2x 50 l water heater on 230V
- Fresh water shore inlet
- Manual bilge pump
- Automatic bilge pumps
- Grey/Black water electric pumps

## **ELECTRICAL**

- Electrical panel 12V / 24V / 230V
- Second Electrical panel 12V / 24V / 230V
- Shoreline 6 kW- 230 V
- 40 kVa DC generator with sound shield
- 400 V Batterie Li-Ion/NMC bank with 140 kWh capacity
- 24 V Batterie Li-Ion/NMC bank with 14 kWh capacity
- 400V -230 V / 15.000 W inverter
- Generator start battery
- 24V lighting throughout
- 12V & 230V electric outlets

## **ACCOMMODATIONS**

- Wood finishes: colored oak and lacquered areas, to be chosen among different ambiances
- Blinds on portholes
- Blinds and mosquito screens on all deck hatches
- Individual controlled Air Conditioning 76.000 Btu throughout the whole boat



## **COMPANIONWAY Main Salon**

- Access to the saloon is through a sliding hatch and a retractable door
- Companionway wooden steps with recessed lighting
- Handrails

## **COMPANIONWAY Crew Area**

- Access to the Crew Area is through an opening hatch.
- Companionway wooden steps with recessed lighting.
- Handrails.

## **ENGINE ROOM**

- Underneath the saloon floor, the engine compartment is located at the most favorable place for the boat's balance
- Access by door on starboard opposite the Laundry room
- Sound-insulated engine compartment
- Remote controlled and automatic fire extinguisher system.
- 230 V outlets and LED lights
- This compartment receives the main electric motor, the generator in its soundproof cocoon, the air conditioning system, the water-maker, the water heater, pumps and filters

## **SALOON**

- The saloon hosts the navigation area, a convertible sofa, and a dining area
- Noticeably clear, the saloon enjoys a remarkable panoramic view to the outside
- Direct and indirect lighting are ensured via overhead and reading lights
- Night courtesy lights & 230 V outlets
- C-Zone Digital-Switching display
- Numerous lockers alongside the hull and behind the seat backs

## **Saloon Helm**

### **Only by Version Deck Salon!**

- Navigation and propulsion control
- 12 V & 230 V outlets
  - C-Zone Digital-Switching display

## **Lounge space (portside)**

- Relaxing lounge, which can be converted into a guest bed
- Free standing bar
- Wine fridge

## **Dining area (starboard)**

- Large L-shaped settee
- Extending dining table for up to 10 Persons
- Niche for a lit painting and the optional TV on lift

## **GALLEY**

- The galley is located aft to starboard and can be separated from the saloon area.
- The galley is equipped with high-quality kitchen appliance for yachts.
- Access to the steering area and Cockpit via an opening hatch (Crew Companionway Hatch)
- Ventilation and natural light via hatch and portholes
- Extraction hood
- Direct and indirect lighting above worktops
- Functional L shaped organization, next to the Crew seating area.
- Electrical distribution switchboard
- C-Zone Digital-Switching display
- The galley also includes:
  - Low and high stowage lockers,
  - Stone worktop
  - Double sink with single lever mixer tap,
  - Refuse bin under the sink
  - 4 burner electric stove and oven with potholder
  - Microwave oven
  - 202l capacity drawer front opening freezer (aft of galley),
  - 407l capacity drawer front opening fridge (front of galley)
  - Dishwasher
  - Integrated full automated coffee-machine
  - Waste compactor
  - 230V outlets

## **OWNER'S CABIN**

- The owner's cabin is located forward and offer the full beam of the yacht
- Light and ventilation via 2 fixed hull portholes and 2 opening deck hatches
- General lighting and reading lights
- Queen size bed 2.00m x 1.60m
- Drawers and wardrobes
- Bookshelves and lockers on forward bulkhead, with recess for TV
- 230V outlets
- The owner's cabin has a fully private en suite toilet & rain shower:
  - Shower cabin lined with stone
  - 1 x opening deck hatch for light and ventilation,
  - Overhead light, and 2nd light close to mirror,
  - Gravity drain out to grey water holding tank,
  - Fresh water electric marine toilet with holding tank,
  - Washbasin with hot and cold water,
  - Bathroom cabinet with electric plug,
  - Mirror, heating towel holder

## **PORT GUEST CABIN**

- Double bed 2.00 m x 1.60m convertible into 2 single beds



- Drawers and wardrobes
- Light and ventilation via fixed hull porthole and opening deck hatch
- General lighting and reading lights
- Hanging locker on portside
- 230 V outlets
- The port guest cabin has a private en suite toilet & rain shower:
  - Shower cabin lined with stone
  - Opening deck hatch for light and ventilation
  - Overhead light, and 2nd light close to mirror
  - Gravity drain out to grey water holding tank
  - Fresh water electric marine toilet with holding tank
  - Washbasin with hot and cold water
  - Bathroom cabinet with electric plug
  - Mirror

### **OWNERS OFFICE STARBOARD (only 3 cabin Layout)**

- U-Desk with office chair
- 230 V outlets
- Navigation and ship info center
- C-Zone Digital-Switching display

### **STARBOARD GUEST CABIN**

- Single bunk beds to starboard 2.00m long (only 4 cabin layout)
- Lower bed extendable to double bed, 2.00m x 1.40m
- Drawers and wardrobes
- Light and ventilation via fixed hull porthole and opening deck hatch.
- General lighting and reading lights
- • Hanging locker to starboard
- 230 V outlet
- The starboard guest cabin has a private en suite toilet & rain shower with a second access door for day toilet.
  - Shower cabin lined with stone
  - Opening deck hatch for light and ventilation
  - Overhead light, and 2nd light close to mirror
  - Automatic wastewater pumps out to grey water holding tank
  - Fresh water electric marine toilet with holding tank
  - Washbasin with hot and cold water
  - Bathroom cabinet with electric plug
  - Mirror

### **AFT PORT GUEST CABIN**

- 2x single beds, 2.05 m long. Convertible into a double bed
- Light and ventilation via fixed hull porthole, opening portholes and opening hatch to cockpit.
- General lighting and reading lights
- Drawers and wardrobes

- Hanging locker on portside
- Lockers alongside
- 230 V outlet
- The aft port cabin has a private en suite toilet & shower:
  - Shower cabin lined with stone
  - Overhead light, and 2nd light close to mirror
  - Automatic wastewater pumps out to grey water holding tank
  - Fresh water electric marine toilet with holding tank
  - Washbasin with hot and cold water
  - Bathroom cabinet with electric plug
  - Mirror

## **STARBOARD CREW CABIN**

- Lateral single bunk beds to starboard, 2.05m long
- Drawers and wardrobes
- Light and ventilation via fixed hull porthole and opening deck hatch.
- General lighting and reading lights • Hanging locker to starboard
- Lockers.
- 230 V outlet

## **PORT CREW CABIN**

- Lateral single bunk beds to starboard, 2.05m long (only 4 cabin layout)
- Drawers and wardrobes
- Light and ventilation via fixed hull porthole and opening deck hatch.
- General lighting and reading lights
- Hanging locker to starboard
- 230 V outlet

## **Crew Toilet and Shower**

- The Crew has a toilet & shower and is located on Port next to the Port Crew Cabin.
  - Shower cabin lined with stone
  - Opening deck hatch for light and ventilation,
  - Overhead light, and 2nd light close to mirror,
  - Automatic wastewater pumps out to grey water holding tank,
  - Fresh water electric marine toilet with holding tank,
  - Washbasin with hot and cold water,
  - Bathroom cabinet with electric plug,
  - Mirror

## DELIVERY

- Antifouling
- Mast stepping and tuning
- Launching
- Mooring kit
- Fuel
- Personalized boat preparation
- 2 days introduction of the yacht with sea trial

Delivery and extensive sailing from our shipyard to a Med-Sea marina with 2 Crew from Alva-Team -up to 3 weeks as an option.

SUNPOWER YACHTS INTERNATIONAL Pty Ltd | ACN: 645 611 061 | ABN: 54 663 500 552 |

| Phone 0479 149 736 | Inter +61 479 149 736 |  
| PO Box 803 Broadbeach Qld 4218 Australia |  
| Suite 5 / 46 Cavill Avenue, Surfers Paradise Qld 4217 |  
| [admin@sunpoweryachts.com.au](mailto:admin@sunpoweryachts.com.au) | [www.sunpoweryachts.com.au](http://www.sunpoweryachts.com.au) |

HEADQUARTERS  
AUSTRALIA | GERMANY | EUROPE | DUBAI | USA | MONACO  
GO TO CONTACT US AT SUNPOWER YACHTS